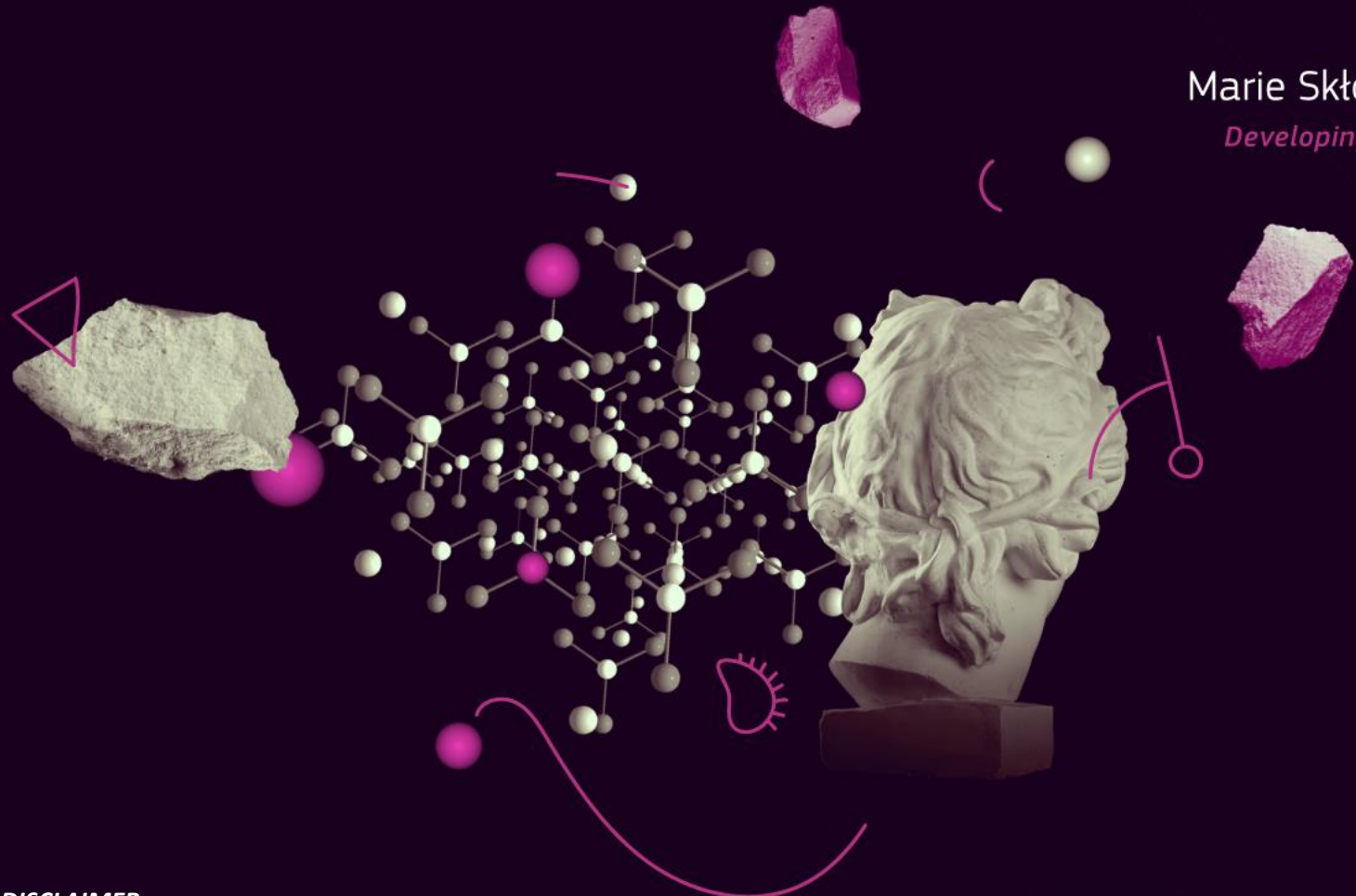




MSCA
Marie Skłodowska-Curie Actions
Developing talents, advancing research

MSCA Postdoctoral Fellowships

Rozenn Le Scao
Celine Pugieux, PhD
European Research Executive Agency (REA)
16 May 2024



DISCLAIMER: This presentation is provided for information purposes only and is not intended to replace consultation of any applicable legal sources. Neither the European Commission nor the European Research Executive Agency (or any person acting on their behalf) can be held responsible for the use made of the guidance provided in this document.

Marie Skłodowska-Curie Actions

image source: iStockphoto.com

Overview

- Postdoctoral Fellowships (PF) overview in the context of the Marie Skłodowska Curie Actions (MSCA) under Horizon Europe
- Main aspects of the PF 2024 call
 - Proposal Completing phase
 - Evaluation process

The MSCA under Horizon Europe

Doctoral Networks

implement doctoral programmes (including joint doctorates and industrial doctorates) **by international partnerships** of organisations from different sectors. They train highly-skilled doctoral candidates, stimulate their creativity, enhance their innovation capacities and boost their employability in the long-term.

Postdoctoral Fellowships

support researchers' careers and foster excellence in research and innovation. Researchers holding a PhD can carry out their research activities, acquire new skills and develop their careers abroad, whilst developing competences in non-academic sectors and working within interdisciplinary teams.

Staff Exchanges

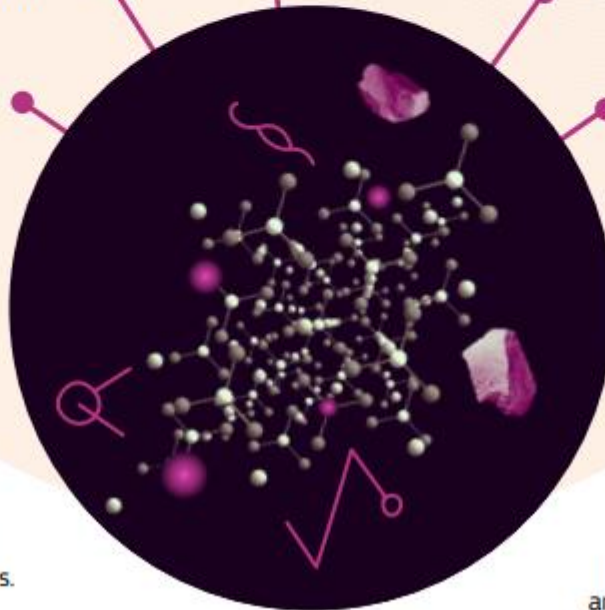
encourage short-term international and inter-sectoral exchanges of research and innovation staff through sustainable, collaborative projects in Europe and beyond. By doing so, they enhance knowledge and skills transfer and increase organisations' research and innovation capacities.

MSCA and Citizens

brings research and researchers closer to children, families and the public at large through the European Researchers' Night - the annual research communication and promotion event taking place at the end of September across EU Member States and Horizon Europe Associated Countries.

COFUND

co-finances regional, national and international doctoral and postdoctoral programmes for researchers' training and career development. The COFUND action spreads MSCA's best practices by setting high standards and excellent working conditions, and boosts training and international, interdisciplinary and inter-sectoral mobility.



MSCA Postdoctoral Fellowships

Objective

“[E]nhance the creative and innovative potential of researchers holding a PhD, wishing to acquire new skills through advanced training, international, interdisciplinary and inter-sectoral mobility.”

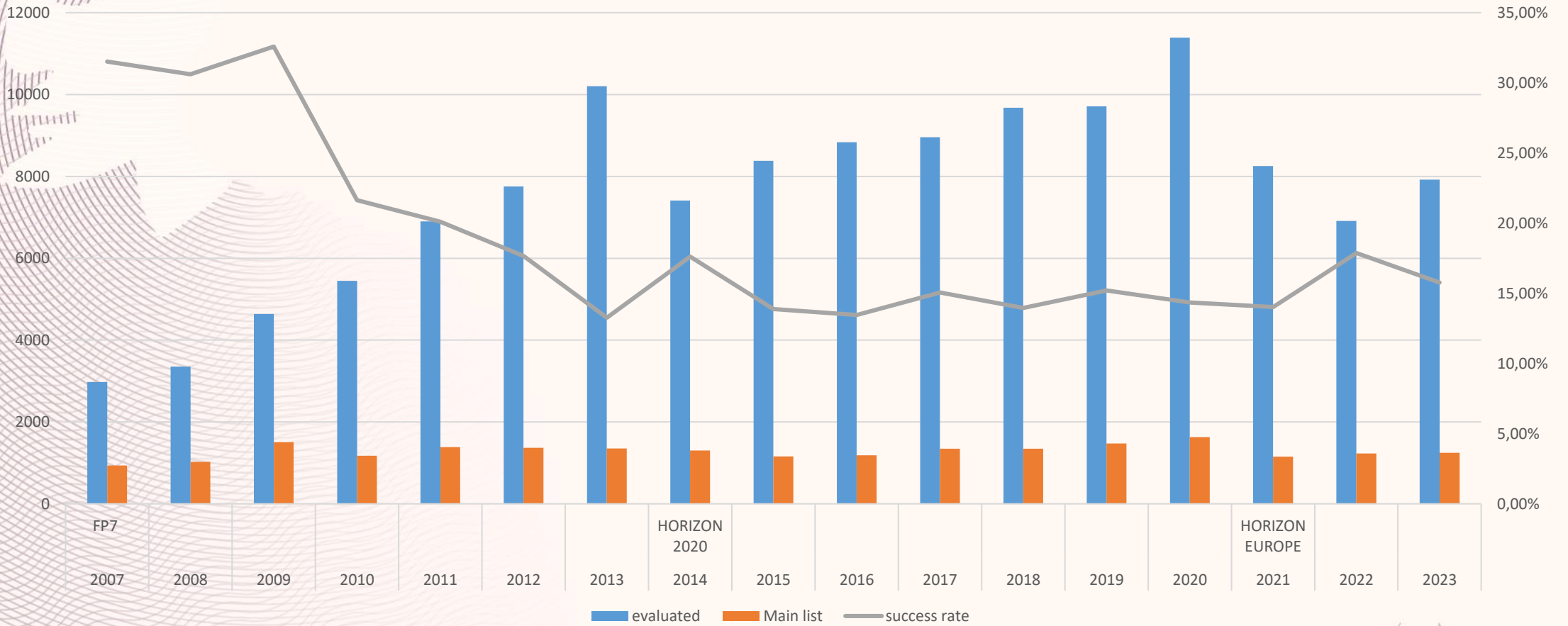
Budget (PF-2024): EUR 417.18 million

- EUR 354.60 million European Fellowships
- EUR 62.58 million Global Fellowships

Call deadline (PF-2024): 11 September 2024

Very popular programme

success rate



MSCA Postdoctoral Fellowships

- **One beneficiary (Mono-beneficiary)**
 - Host organization must be in EU MS or Horizon Europe Associated Country*
 - From the academic or non-academic sectors**
- **One researcher**
 - Post Doc
 - Max. 8 years Full Time Equivalent (FTE)
- **Open to all research domains, including Euratom**
- **Two Types:**
 - European Fellowships (EF)
 - Global Fellowships (GF)

* As of 01 January 2024, UK became an Associated Country to Horizon Europe

** Definitions of the academic and non-academic sectors are given page 108:

Horizon Europe Work Programme 2023-2025 / 2. Marie Skłodowska-Curie Actions (European Commission Decision C(2024) 2371 of 17 April 2024)



European Fellowships - EF

Researcher (PhD) - Any Nationality



Beneficiary: EU Member State or Associated Counties of H.E.

Duration:

- 12-24 months (including optional secondment(s))
- + Optional non-academic placement up to 6 months

Global Fellowships- GF

Researcher (PhD) - National or long-term resident* of EU Member States or Associated Countries of H.E.



Outgoing phase: Third country 12 – 24 months
(secondment(s): can include 3 months max. at the Beneficiary at the start of project)



Return phase: 12 months mandatory at the beneficiary (EU Member State or Associated Counties)

Duration:

- 24-36 months (including optional secondment(s))
- + Optional non-academic placement up to 6 months

* Definitions of the long-term resident given page 122 in Horizon Europe Work Programme 2023-2025 / 2. Marie Skłodowska-Curie Actions (European Commission Decision C(2024) 2371 of 17 April 2024)

Eligibility Criteria

Postdoctoral Researchers only

- Must be “*in possession of a doctoral degree*” before call deadline
- If not yet awarded, must be successful, “*unconditional*” defence before call deadline

Max. 8 years FTE std postdoctoral research experience

- Measured from date of PhD award (time outside research not counted)

Researcher Mobility

- Must not have resided or carried out their main activity in country of the beneficiary (EF) or the host for the outgoing phase (GF) for more than 12 months in the 36 months immediately before the call deadline
- For GF, must be National or long-term resident of EU Member States or Associated Countries of H.E.

Example 1

European Fellowship

- French national researcher awarded a PhD in 2020 in Germany.
- Still residing in Germany
- Applies for a European Fellowship together with a host institution in France.



ELIGIBLE?

- Awarded a PhD before the Call deadline;
- less than 8 years' experience in research since award of PhD;
- has not resided in France for more than 12 months in previous 3 years.

Example 2

Global Fellowship

- Cameroonian researcher living in France for the previous 3 years (up to the call deadline), PhD in 2023, applies for a Global Fellowship with a host in France, and outgoing phase in the US.

Eligible?

- Awarded a PhD before the call deadline;
- less than 8 years' experience in research since award of PhD;
- not more than 12 months in the US in the 3 years prior the call deadline
- ...but “long-term resident” in EU/AC?



Secondments & Non-Academic Placements

Do not confuse:

- ≠ Secondment
- ≠ Non-Academic Placement (NAP)
- ≠ Short visits (e.g. field work)

A mix of secondment /NAP/short visits are allowed within a proposal
Respect the correct terminology



Secondments (Optional)

- **European Postdoctoral Fellowship:** Up to 1/3 of the standard project duration.
- **Global Postdoctoral Fellowship:** Up to 1/3 of the outgoing phase.
 - Secondment(s) must take place during the outgoing phase
 - A maximum of three months of such secondment(s) can be spent at the start of the project at the beneficiary
- Secondments can be divided into several shorter periods
- Any sector (academic and non-academic)
- Any country worldwide
- No additional budget for secondment



Non-Academic Placements - NAP (Optional)

- Must be implemented in the non-academic sector*
- Must take place after the standard duration of the fellowship
- Additional budget for the NAP, to be encoded in Part A
- Must take place in MS or AC of H.E.
- 6 months duration maximum



* Definitions of the academic and non-academic sectors are given page 108:

Horizon Europe Work Programme 2023-2025 / 2. Marie Skłodowska-Curie Actions (European Commission Decision C(2024) 2371 of 17 April 2024)

Some Examples

European Fellowship

Months	1	2	3	4	5	6	7	8	9	10	11	12	13	14	15	16	17	18	19	20	21	22	23	24	25	26	27	28	29	30				
WP1	█																																	
WP2									█																									
WP3																		█																
Secondments			█								█																							
NAP																									█									

↓
Optional 6 M max,
must be located in MS or AS

Global Fellowship



Months	1	2	3	4	5	6	7	8	9	10	11	12	13	14	15	16	17	18	19	20	21	22	23	24	25	26	27	28	29	30	31	32	33	34	35	36			
WP1	█																																						
WP2									█																														
WP3																		█																					
....																																							
Secondments	█										█															█													

↓
Optional, max. 3 months at the
start of project at the beneficiary

↓
Optional,
anywhere in
the world

Optional
NAP
6M max
MS/AC

Budget – PF-2024 Unit Contributions

MSCA Postdoctoral Fellowships	Contributions for the recruited researcher					Institutional unit contributions	
	Per person-month					Per person month	
	Living Allowance	Mobility Allowance	Family Allowance	Long-term leave allowance (if applicable)	Special needs allowance (if applicable)	Research, training and networking contribution	Management and indirect contribution
	€5,990*	€710	€660	€6700 x % covered by beneficiary	Requested unit x (1/number of months)	€1,000	€650

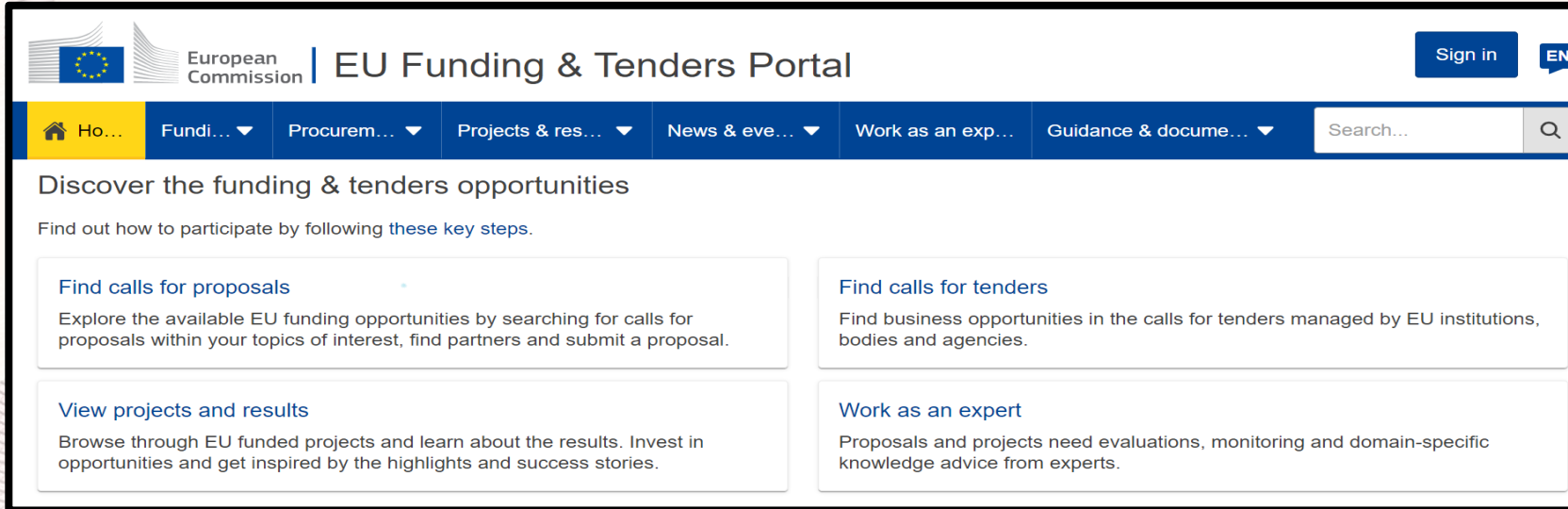
*Living Allowance corrected by a **country correction coefficient (CCC) – FR = 118,1%**

Figures are gross amount



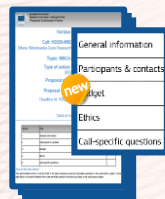
PROPOSAL COMPLETING PHASE

PF 2024 Templates to be used



The screenshot shows the homepage of the European Commission's EU Funding & Tenders Portal. The header includes the European Commission logo, the text "EU Funding & Tenders Portal", a "Sign in" button, and a language selector set to "EN". A navigation menu contains links for Home, Fundi..., Procurem..., Projects & res..., News & eve..., Work as an exp..., and Guidance & docume..., along with a search bar. The main content area is titled "Discover the funding & tenders opportunities" and provides instructions on how to participate. It features four key steps: "Find calls for proposals" (exploring EU funding opportunities), "Find calls for tenders" (finding business opportunities), "View projects and results" (browsing EU funded projects), and "Work as an expert" (providing evaluations and advice).

Part A (Application Form)



Part B (Technical Description - PDF)



Call Deadline: 11 Sept 2024

Part A (Application Form)

- **One Acronym** and **One Title** for the project
- Select the **Scientific Area** (i.e. 1 Panel out of the 8 proposed) which is the “best fit” for the evaluation of your proposal
- 3 to 5 “**Descriptors**” which best characterise the content of the proposal, in descending order of relevance
 - First 3 descriptors linked to selected panel, others unrestricted
 - **Free keywords**
- Abstract: **maximum 2,000 characters**
- **Resubmission** of a proposal must be declared

Part A (Application Form)

- **Beneficiary Information** (including validated PIC, supervisor)
- **If Global Fellowship: Outgoing host Information** (in addition to Beneficiary Information)
 - + Mandatory Letter of Commitment (LoC) for the Outgoing host for GF will need to be included in **Part B2**
- **Researcher Information**, including:
 - PhD award date (or date of successful defence)
 - If PhD more than 8 years before the call deadline, please complete table for extensions for the time spent outside research*
 - Countries of residence during the last 5 years up until the call deadline
- **If NAP: Non-Academic Placement host Information**
 - NAP budget to be added in budget table
- **If Secondment:** The associated partner for the secondment must not be included in Part A

* Explanation given in the *MSCA PF 2024 Guide for Applicant*

Part B1 (Technical Description)

Part B of the Proposal is comprised of *two documents* (**Part B1** and **Part B2**), to be uploaded as separate PDF files

Part B1:

- Mandatory use of the **Part B template** available on the MSCA-PF Call page and structure your proposal accordingly
- Technical description of the project
- **Limit of 10 pages** (excess pages will not be visible to evaluators)
- **Minimum font size 11 points**, with standard spacing, including texts in tables

Part B1 (Technical Description)

1. Excellence	2. Impact	3. Quality and efficiency of the implementation
1.1 Quality and pertinence of the project's research and innovation objectives (and the extent to which they are ambitious, and go beyond the state of the art)	2.1 Credibility of the measures to enhance the career perspectives and employability of the researcher and contribution to his/her skills development	3.1 Quality and effectiveness of the work plan, assessment of risks and appropriateness of the effort assigned to work packages
1.2 Soundness of the proposed methodology (including interdisciplinary approaches, consideration of the gender dimension and other diversity aspects if relevant for the research project, and the quality of open science practices)	2.2 Suitability and quality of the measures to maximise expected outcomes and impacts, as set out in the dissemination and exploitation plan, including communication activities	3.2 Quality and capacity of the host institutions and participating organisations, including hosting arrangements
1.3 Quality of the supervision, training and of the two-way transfer of knowledge between the researcher and the host	2.3 The magnitude and importance of the project's contribution to the expected scientific, societal and economic impacts	
1.4 Quality and appropriateness of the researcher's professional experience, competences and skills		
50%	30%	20%

Part B2 (Technical Description)

Part B2 (no formal page limit)

- CV of the Researcher (indicative length: 5 pages)
- Capacity of the Participating Organisations (Section 5.1 and 5.2)
 - Beneficiary, Outgoing phase host for GF (if GF), organisation for NAP (if NAP), organisation for Secondment (if secondment), organisation linked to the beneficiary (if applicable)
- Letter of Commitment (for the outgoing phase of the Global Fellowship)



EVALUATION PROCESS

The MSCA-PF Evaluation

Large-Scale Evaluation

Due to large number of proposals

Standard Peer-Review

≥ 3 experts per proposal

Bottom-up Programme

Proposals and Experts from all disciplines

Expert Balance

of experience, nationality, gender, age, sector, etc.

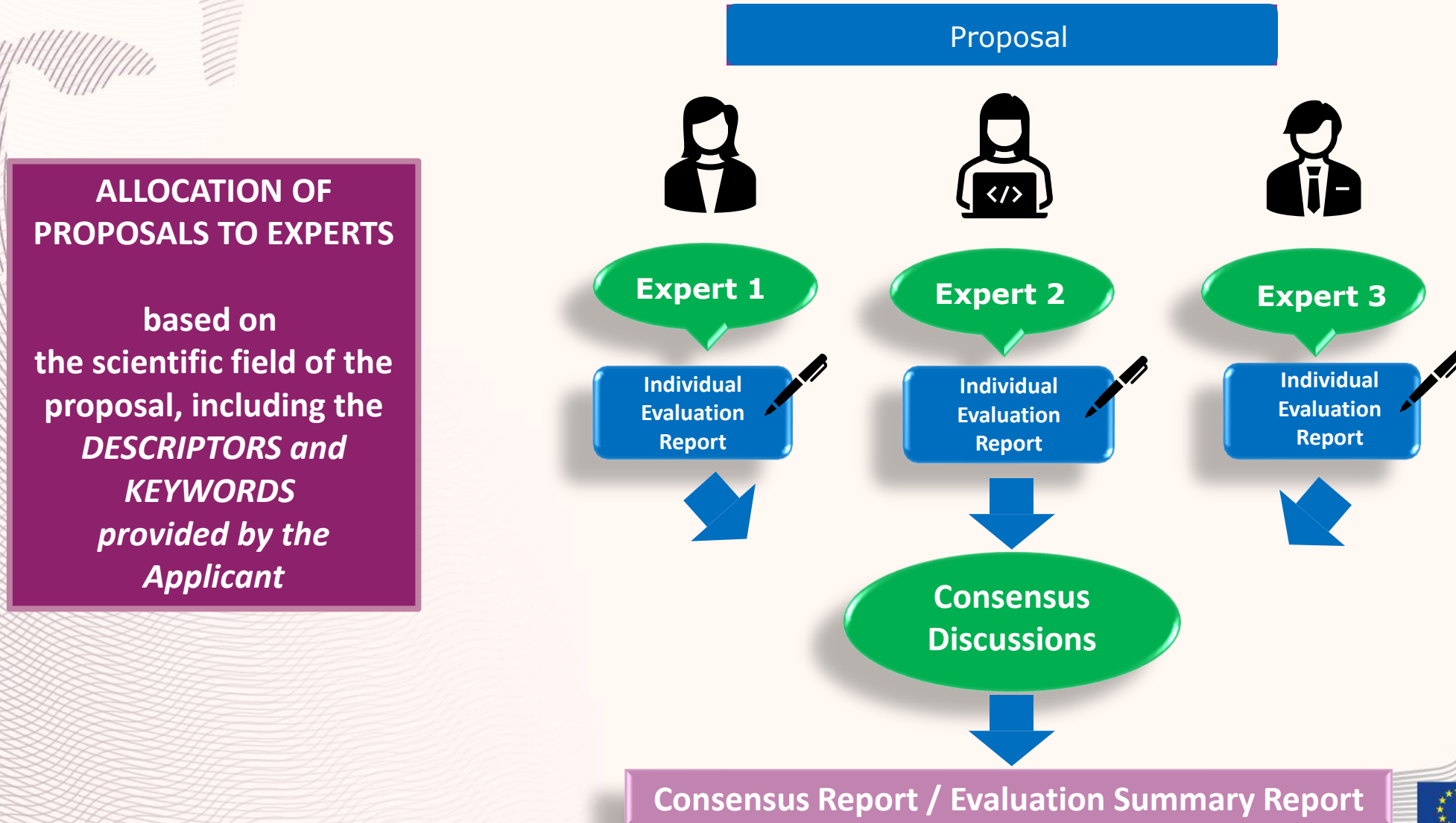
8 Scientific Panels

CHE, ECO, ENG, ENV, LIF, MAT, PHY, SOC

Single-Stage Evaluation

Call deadline to funding decision:
5 months (+3 months to GA signature)

Evaluation Process Overview



ALLOCATION OF PROPOSALS TO EXPERTS

based on the scientific field of the proposal, including the **DESCRIPTORS** and **KEYWORDS** provided by the Applicant



Evaluation criteria

1. Excellence	2. Impact	3. Quality and efficiency of the implementation
1.1 Quality and pertinence of the project's research and innovation objectives (and the extent to which they are ambitious, and go beyond the state of the art)	2.1 Credibility of the measures to enhance the career perspectives and employability of the researcher and contribution to his/her skills development	3.1 Quality and effectiveness of the work plan, assessment of risks and appropriateness of the effort assigned to work packages
1.2 Soundness of the proposed methodology (including interdisciplinary approaches, consideration of the gender dimension and other diversity aspects if relevant for the research project, and the quality of open science practices)	2.2 Suitability and quality of the measures to maximise expected outcomes and impacts, as set out in the dissemination and exploitation plan, including communication activities	3.2 Quality and capacity of the host institutions and participating organisations, including hosting arrangements
1.3 Quality of the supervision, training and of the two-way transfer of knowledge between the researcher and the host	2.3 The magnitude and importance of the project's contribution to the expected scientific, societal and economic impacts	
1.4 Quality and appropriateness of the researcher's professional experience, competences and skills		
50%	30%	20%

Proposal Ranking

- Proposals ranked – and funding allocated –
 - **by Scientific Panel, and**
 - **by type of Fellowship** (*European and Global Fellowships*)
- **Seal of Excellence***: awarded to proposals which score $\geq 85\%$
- **New in HORIZON EUROPE**: Resubmission restriction for proposals with same researcher + same host(s) scoring $<70\%$ in previous evaluation
- **REA staff** ensures the evaluation process is respected
- **Independent observer** scrutinises the entire evaluation

* <https://marie-sklodowska-curie-actions.ec.europa.eu/news/several-countries-make-funding-available-for-msca-seal-of-excellence-holders>

ERA FELLOWSHIPS

One single evaluation under MSCA-PF call, one submission & a simple agreement (tick box)
Applicants significantly increase their funding opportunities to be funded

Proposals are eligible for ERA fellowship funding if:

- Submitted by a host institution from a 'widening' country, and for France this concerns the Outermost Regions:
 - Guadeloupe, French Guiana, Martinique, Saint-Martin, Réunion, Mayotte
- Admissible and eligible for MSCA-PF European Fellowships (EF)* (not the GF)
- Have agreed to be considered for ERA fellowships call
- Failed to reach main list under MSCA-PF-EF call
- Indicative Budget for 2024: EUR 8 million

..

* See *Horizon Europe Work Programme MSCA & Annex 11 Horizon Europe Work Programme* (European Commission Decision C(2024) 2371 of 17 April 2024) page 72

MSCA – EURATOM Research and Training

*‘To enhance nuclear expertise and excellence as well as synergies between Programmes, organisations active in nuclear research established in one of EU Member States or countries associated to the Euratom Research and Training programme 2021-2025, are eligible to participate.’**

- Applicants must comply with all conditions defined in the MSCA Postdoctoral Fellowships calls set in the Work Programme.
- Specific eligibility conditions that apply to MSCA postdoctoral fellowships in the research areas covered by the Euratom Research.
- Indicative budget: EUR 1 million from the 2024 budget
- Link to Euratom Work Programme*:
 - https://research-and-innovation.ec.europa.eu/funding/funding-opportunities/funding-programmes-and-open-calls/horizon-europe/euratom-research-and-training-programme_en

* See also Horizon Europe Work Programme MSCA (European Commission Decision C(2024) 2371 of 17 April 2024)
And Euratom Research and Training Programme Euratom Work Programme 2023-2025 for nuclear research and training / Annex -
Euratom Research and Training Programme Work Programme 2023-2025 (p75 – Support for MSCA in nuclear research and training

General advices

- Distinction between European & Global Fellowships
- Careful with respecting eligibility requirements:
 - PhD, mobility and max 8 years research experience
- Do not confuse Secondments and Non-Academic Placements, and use the correct terminology
- Ineligible secondment and/or Non-Academic Placement will be disregarded
- Careful with respecting the font requirements
- Part B1: Do not exceed the 10-page limit of the proposal
- Part B2: Add the Letter of Commitment (for Global Fellowships)

Indicative timeline

Call Opening:	23 April 2024
Call Deadline:	11 Sept 2024
Evaluation Period:	Oct 2024 – Jan 2025
Information Letter:	Feb 2025
Project Starting Dates:	Apr 2025 - Sept 2026

Resources and Guidance

- [MSCA Work Programme 2023-2025](#)
- [MSCA PF 2024 – Call page on the EU funding & Tenders Portal](#)
- [MSCA PF 2024 - Guide for Applicants](#)
- [Proposal templates \(PF-2024\)](#)
- [Funding and Tenders Portal Q&As](#)
- [MSCA Website](#)

- [National Contact Points](#)
- [Research Enquiry Service](#)

**Thank you
for your attention!**