



# Marie Skłodowska-Curie Actions

## Focus on MSCA COFUND

7 February 2025

Marc PATUZZO

REA.A.4

# What is MSCA COFUND?

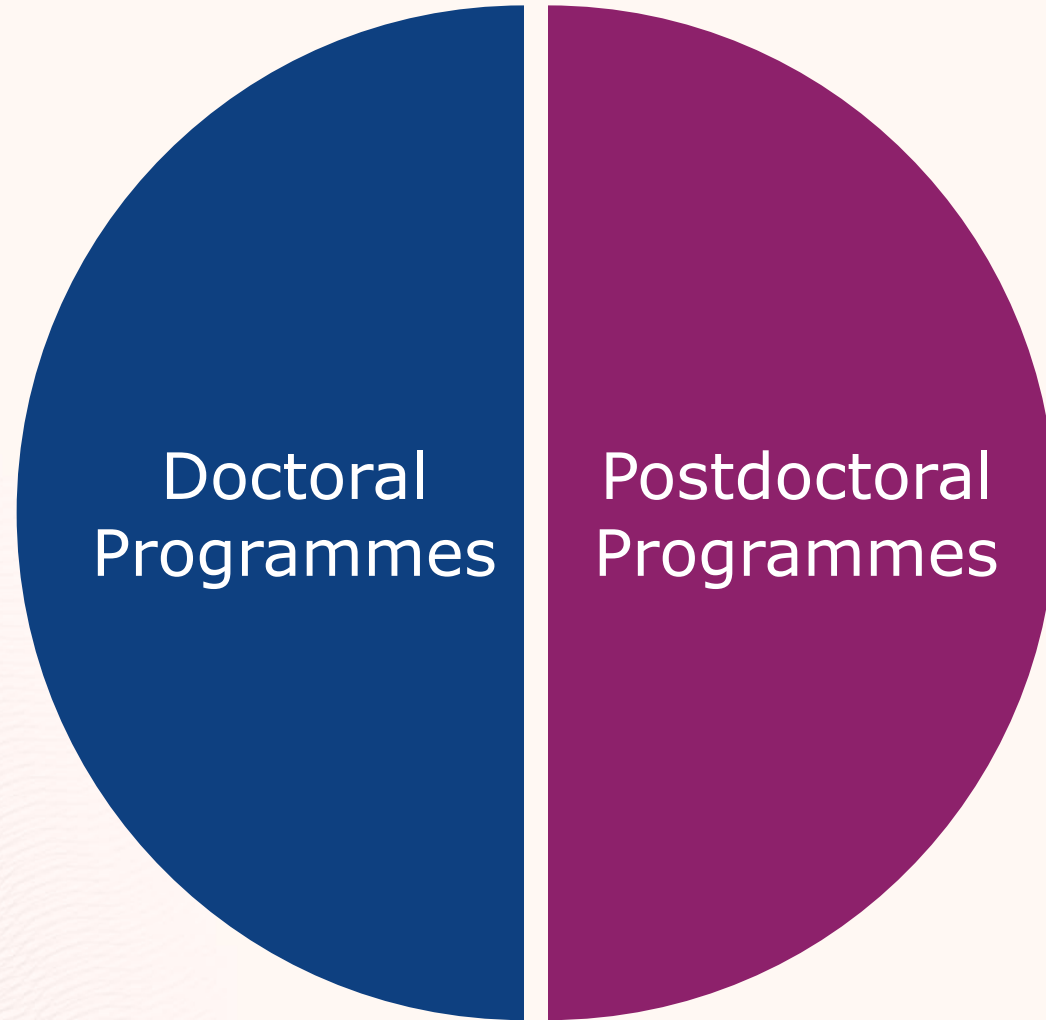
## **Mono-beneficiary action:**

⑩ new or existing national, regional, institutional schemes for doctoral training & postdoctoral fellowships

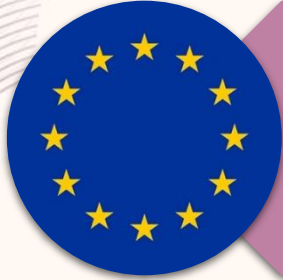
## **Focus:**

- best practice, high standards & excellent working conditions, sustainable structuring effects, encouraging synergies with other EU funds

# COFUND Modalities



# MSCA COFUND – For whom?



Single legal entity established in an EU Member State



Single legal entity established in HE associated country



All beneficiaries must recruit at least three researchers

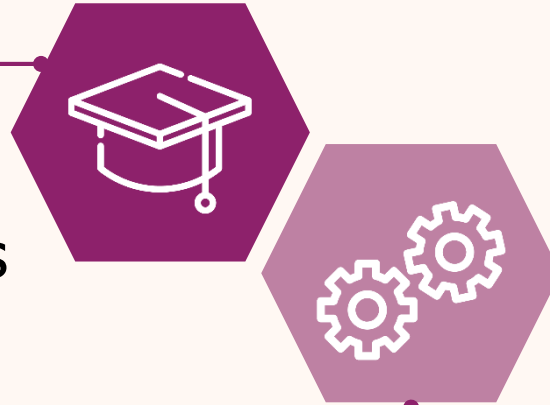
# COFUND Academic & non-academic sectors

## Academic sector

Higher education establishments

Non-profits

International European Research Organisations



## Non-academic sector

Any socio-economic actor not included in academic sector

# COFUND – Possible structures

## 1 - Hierarchical

**Research funding organisation**

**University 1**

**University 2**

**Laboratory 1**

...

# COFUND – Possible structures

## 2 - Horizontal



# COFUND – Possible structures

## 3 – Single Point



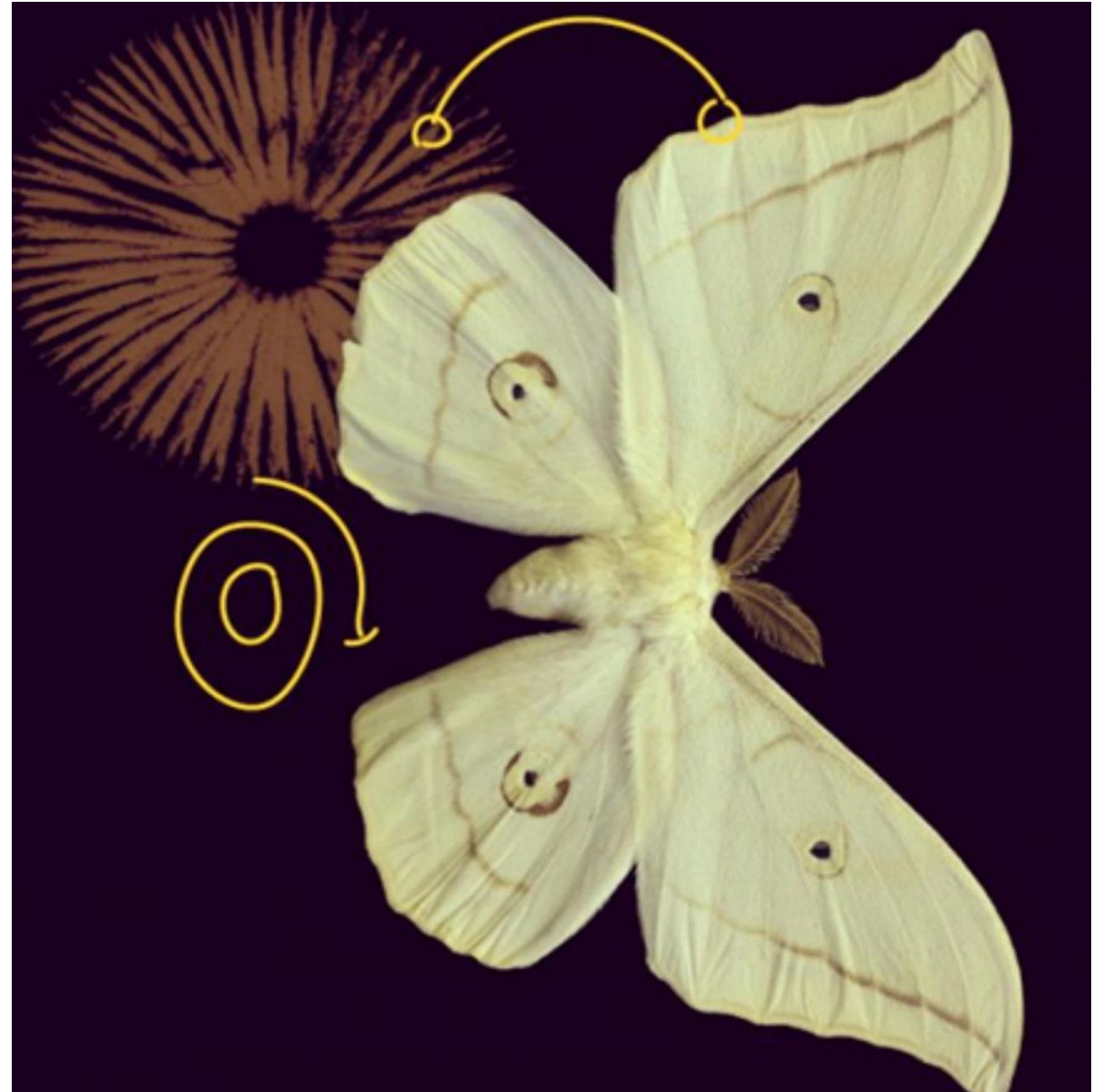
We do  
everything



COFUND partners

**Implementing partners**

**Associated partners**



COFUND



## Co-funding

Max. EUR 10m/beneficiary/call



## Duration

Programme: max. 60 months  
Fellowship: min. 3 months



## Recruitment

Fellows: min. 3 fellows must be recruited

# COFUND – Eligible researchers



**Doctoral  
programmes**



**Postdoctoral  
programmes**



**Any  
nationality**



**Mobility rule**

# COFUND – Bear in mind



**Researchers 100%  
on project**



**EU contribution  
coverage**



**Long-term  
leave  
allowance  
&  
special  
needs  
allowance**



**Researcher eligibility**

## COFUND – Bear in mind



**Part-time** allowed for personal, family, or professional\* reasons (\*upon approval)



**Secondments** up to 1/3 of fellowship duration



**COFUND Seal of Excellence**  
for applications scoring  $\geq 85\%$

# COFUND – Award criteria

**Excellence (50%)**

**Impact (30%)**

**Implementation (20%)**

COFUND

# Budget structure & Project implementation



# COFUND Budget – EU contribution

**For recruited researchers & institutional contributions  
per person-month**

**Doctoral  
programmes  
EUR 3,300**

**Postdoctoral  
programmes  
EUR 4,700**

**Any cost items of the programme supported**



## COFUND budget - Conditions

**Total amount of programme to be specified**

- Amounts for researchers
- Amounts for organisation(s)

**Minimum  
monthly gross remuneration  
+  
mobility costs**

- Doctoral candidates: EUR 3,300\*
- Postdoctoral candidates: EUR 4,700\*

\*Min. EUR 1,400 (doctoral) & EUR 1,990 (postdoc) if fixed-amount fellowship

# COFUND – Cost categories

**Long term  
leave  
allowance**

**Special needs  
allowance**

Upon request

# COFUND – Project implementation



Employment contract or equivalent direct contract



No fixed-amount fellowships

# COFUND – Project implementation

**Independent experts  
involved at every  
stage of selection  
process**

**The selection of the  
researchers**

**Project  
implementation**

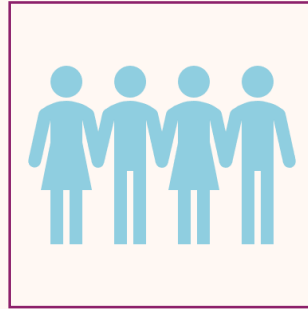
**Training programme**

**Postdoctoral  
programmes must  
involve independent  
international experts**

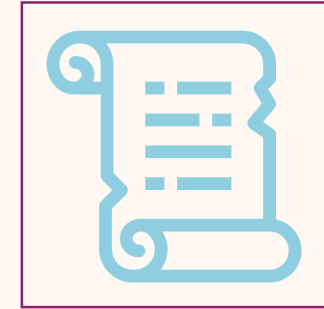
# COFUND – Project implementation



**Call timing**



**Number of fellows  
to be recruited**



**Reserve list**

## COFUND – Supervisor in application and recruitment process

Rationale to be specified for contact with supervisor at application stage

No involvement in the drafting of proposal and no approval required before submission

No role in recruitment process or decision making

Recruitment process to be open, transparent, merit-based, impartial and equitable

Assurance of no conflict of interest and no preselection in the recruitment process

## COFUND – Use of artificial intelligence

Use of generative AI tools permitted

Applicants bear legal responsibility for their proposal

No role in recruitment process or decision making

Inaccurate/erroneous data generated by AI tools to be penalised

Plagiarism may lead to proposal rejection

# COFUND – 2025 call details

Call	2025	
	Opening Closing	Budget (EUR m)
<b>COFUND 2025</b>	<b>23 January 25 24 June 25</b>	<b>101.8</b>





# Thank you!

---

#MSCA #HorizonEU

 [European Research Executive Agency](https://www.linkedin.com/company/european-research-executive-agency)

[https://rea.ec.europa.eu/funding-and-grants/horizon-europe-marie-sklodowska-curie-actions\\_en](https://rea.ec.europa.eu/funding-and-grants/horizon-europe-marie-sklodowska-curie-actions_en)

---



© European Union 2021

Unless otherwise noted the reuse of this presentation is authorised under the [CC BY 4.0](https://creativecommons.org/licenses/by/4.0/) license. For any use or reproduction of elements that are not owned by the EU, permission may need to be sought directly from the respective right holders. Image sources: [iStockphoto.com/Unsplash](https://www.istockphoto.com/)

